

I want to
Know
more about my watershed

Starter Kit **\$20.00**

Based on what experienced watershed coordinators "wished they'd have known before they started," this kit provides a jump-start to beginning a successful locally-led watershed partnership. Includes everything listed below and more.

Partners for Watersheds Video

Describes what a watershed is and the benefits of a locally-led watershed partnership. (13 min.)

Guides to...

- Getting to Know Your Local Watershed
- Building Local Partnerships
- Putting Together a Watershed Plan
- Managing Conflict
- Groundwater-Surface Water Interaction
- Reflecting on Lakes
- Wetlands: A Key Link in Watersheds

National Watershed Network

Registration is free. Call to request registration form.

CTIC Catalog

See www.ctic.purdue.edu

Name

Company/Organization

Address

City/State/Zip (+4 digits)

Phone

Fax

Email

Check Enclosed

Address order to
CTIC, 1220 Potter Dr, Ste 170, W Lafayette, IN 47906;
Call 765 494-9555. Fax 765 494-5969

Do you
know
your
watershed?

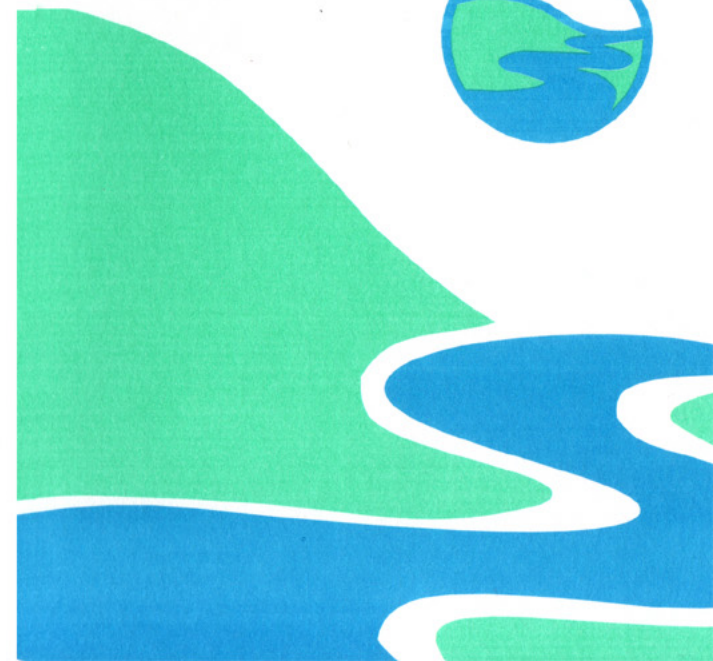
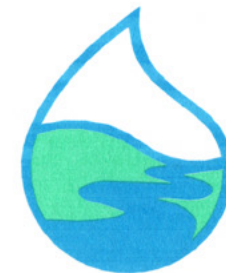
1. Where does the water go when it leaves your neighborhood?
2. Do you know what the quality of the water is?
3. Do you know the boundaries of your watershed?
4. Where do you live, work and play in relation to these boundaries?
5. How do you and your neighbors affect the quality of water in your watershed?
6. Who drinks the water that drains (to groundwater or streams and lakes) from the area where you live and work?
7. How do people use the water that leaves your area?
8. Is the receiving water considered adequate for all of it's designated uses?
9. Do you know the quality of the waters leaving your watershed?
10. Do you know other stakeholders (people who live, work or play) in your watershed?



Coordinated by the Conservation Technology Information Center
1220 Potter Drive, Suite 170, W Lafayette, IN 47906-1383
Tel 765 494-9555
Email kyw@ctic.purdue.edu
Web www.ctic.purdue.edu/kyw



Do You
Know
Your
Watershed?



What's a Watershed?

A watershed is the land that catches rain or snow and drains or seeps into a marsh, stream, river, lake or groundwater.

Watershed address

A system for identifying and numbering watersheds has been developed. Thus

watersheds in the United States have both a proper name and a corresponding number. This number is commonly called the "watershed address."

Watershed Address System

Description	Proper Name	Address
Region	Ohio River	05
Subregion	Wabash-Patoka-White	0512
Basin	Wabash River	051201
Subbasin	Vermillion River	05120109
Watershed	North Fork Vermilion	05120109090
Subwatershed	Lake Vermilion	0512010909005

Your actions count

Your actions—and the actions of others in your watershed—impact the quality of water coming from your watershed. As water drains to the lowest point in the watershed—running across the surface or seeping into the ground and moving with the shallow

groundwater—it can pick up tiny particles of soil, oil, road salt, animal manure, nutrients, pesticides, and other pollutants.

Quality soil, vegetation and water management can help negate some actions. However, the best water quality results from responsible actions by everyone in the watershed combined with effective watershed planning.

Success indicators

Experience has taught us that locally-led watershed partnerships can be very effective in addressing water quality. Successful watershed partnerships share some important characteristics:

Partnership is inclusive. A broad range of stakeholders—organizations, companies, government and others representing various points of view—participate in making decisions.

Coordination is neutral. Stakeholders work together to find a mutually respected local leader to coordinate partnership activities.

Actions are voluntary. The reasons for individual stakeholders to voluntarily change their actions are compelling. For instance, some people need help seeing the economic benefits while others make changes based on peer pressure or the fact that it's the "right thing to do."

Strategies are specific. Solutions are developed to match the needs of the particular watershed: water quality/quantity issues, lifestyles, cultures, economy, etc. In most instances, successful strategies offer the flexibility to accommodate individual circumstances.

How to learn more

Your local Conservation District, Natural Resources Conservation Service, Cooperative Extension, water agency, water utility, county or city planner, private consultant, and a host of others can help you get started. Start a map of your watershed and any available water quality data. Try to answer the questions on the back of this brochure. Send for a Know Your Watershed Kit (see attached form). The map, Starter Guides and more is on the web at www.ctic.purdue.edu/kyw/